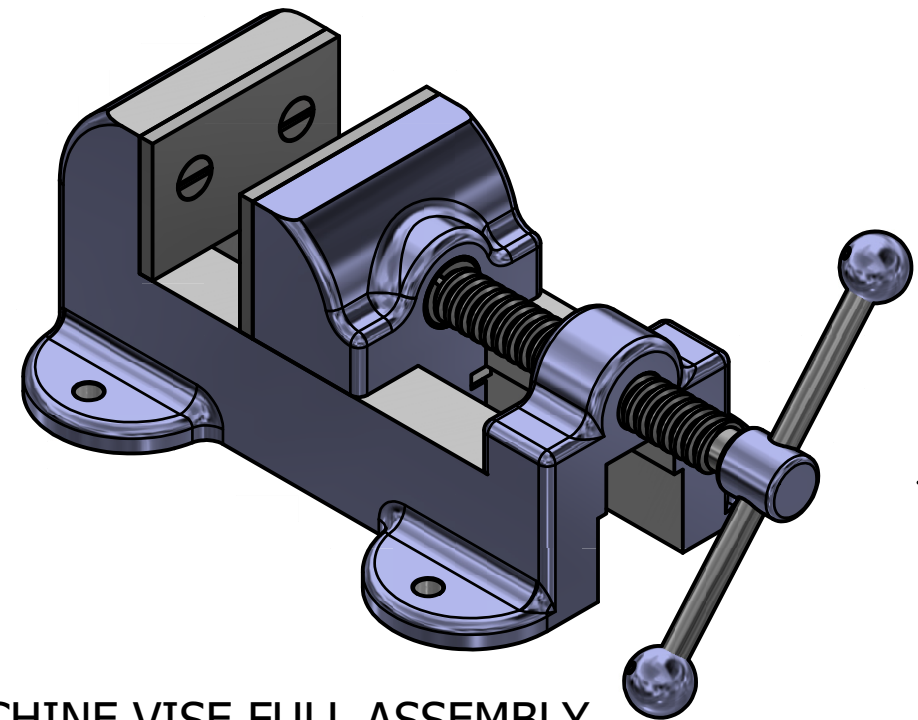


MACHINE VISE EXPLODED VIEW
SCALE 1 / 2

| PARTS LIST | | | | |
|------------|-----|---------------|-------------------|--------------------|
| ITEM | QTY | PART NUMBER | MATERIAL | DESCRIPTION |
| 1 | 1 | BASE | CAST IRON | |
| 2 | 1 | SLIDING JAW | CAST IRON | |
| 3 | 2 | JAW PLATE | SAE-3140 | |
| 4 | 1 | WISE SCREW | SAE-3140 | |
| 5 | 1 | COLLAR | SAE-1020 | |
| 6 | 1 | KEY | SAE-1020 | |
| 7 | 1 | HANDLE ROD | COLD ROLLED STEEL | |
| 8 | 2 | HANDLE BALL | SAE-1020 | |
| 9 | 2 | SLIDE KEY | SAE-1020 | |
| 10 | 2 | SET SCREW | SAE-1016 | |
| 11 | 4 | MACHINE SCREW | TYPICAL | 1/4 FL HD MACH SCR |
| 12 | 2 | TAPER PIN | TYPICAL | #000 TAPER PIN |



MACHINE VISE FULL ASSEMBLY
SCALE 1 / 2

LEGEND:

- ∅ DIAMETER
- R RADIUS
- ° DEGREES
- COUNTERBORE
- ∇ DEPTH
- ∨ COUNTERSINK

GENERAL NOTES:

ALL ROUNDS AND FILLETS R.125 UNLESS OTHERWISE NOTED



DIGITAL DESIGN
GRAPHICS
TECHNOLOGY

WWW.DDGT.NET

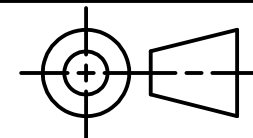


NEIL SCHAFER

1(707)761-6187

WWW.DDGT.NET/STUDENTPAGES/NSCHAFFER

NEILSCHAFER97@YAHOO.COM



TOLERANCES UNLESS SPECIFIED:

DECIMAL INCHES
X = ±.020
XX = ±.010
XXX = ±.005
FRACTIONAL ±1/64"
ANGLES ±1 DEGREE

SURFACES 32 ✓

COURSE: DDGT 240

INVENTOR DRAWING NAME:
MACHINE VISE

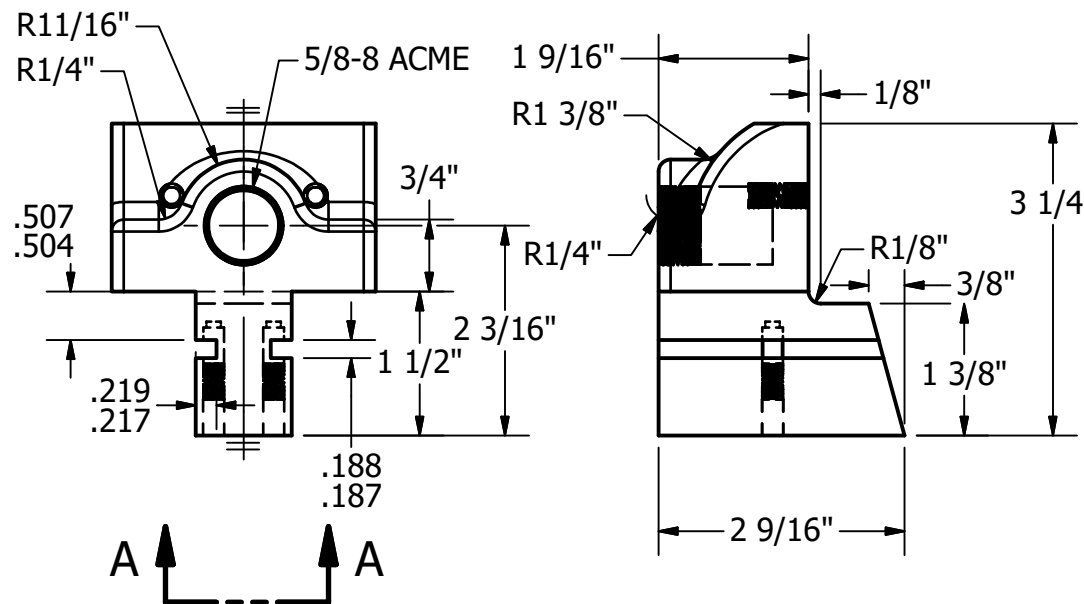
FIG #: 14-71

DRAFTER: NEIL SCHAFER

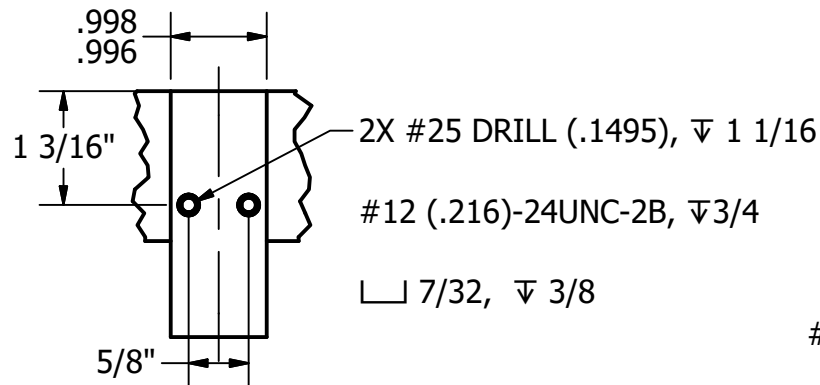
DATE: 9/26/2018

SCALE: AS NOTED

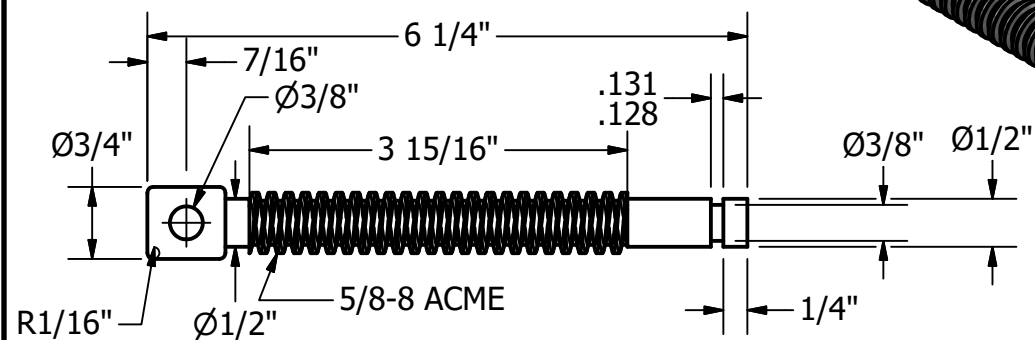
PAGE #: 1 OF 3



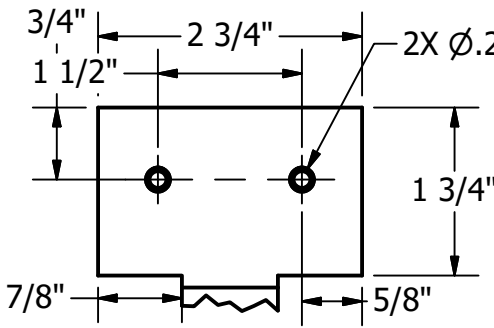
SLIDING JAW
SCALE 1 / 2



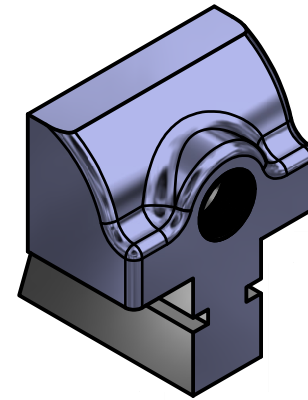
VIEW A-A
SCALE 1 / 2



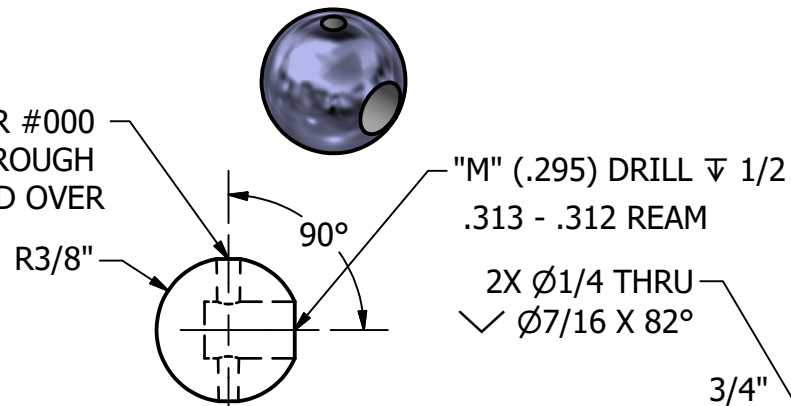
WISE SCREW
SCALE 1 / 2



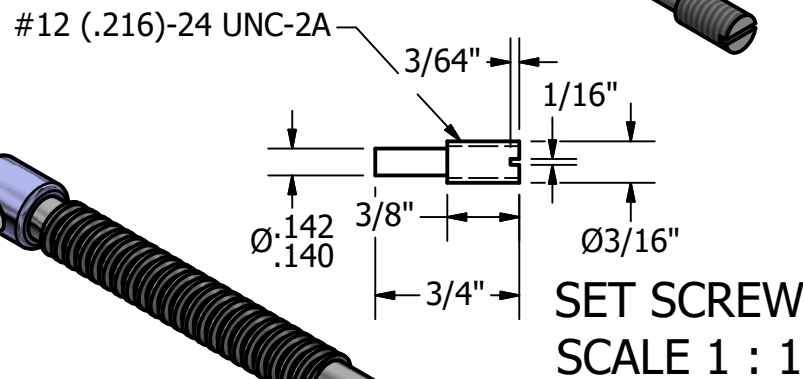
VIEW B-B
SCALE 1 / 2



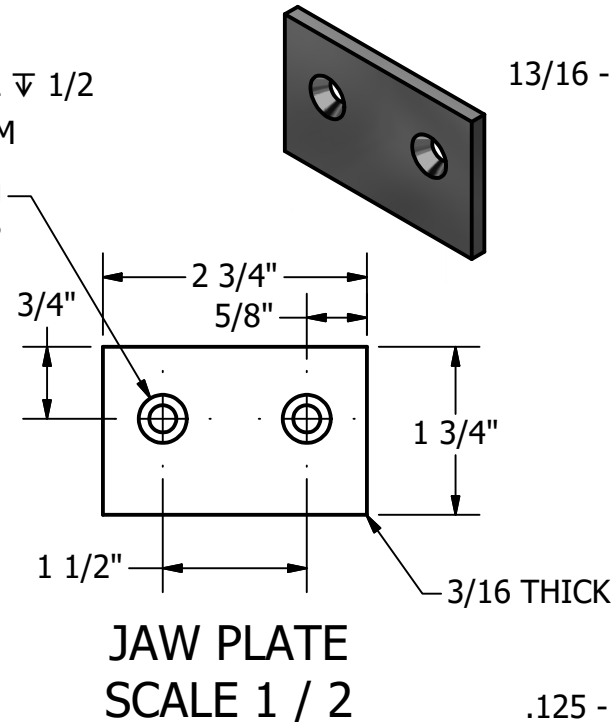
#37 DRILL AND REAM FOR #000 TAPER PIN CLEAR THROUGH PEEN SMALL END OVER



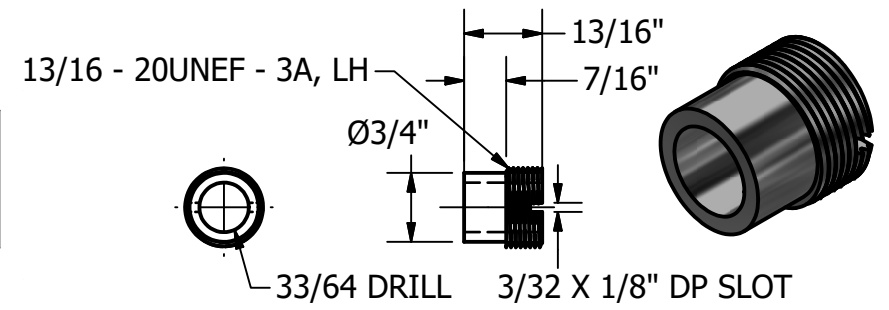
HANDLE BALL
SCALE 1 : 1



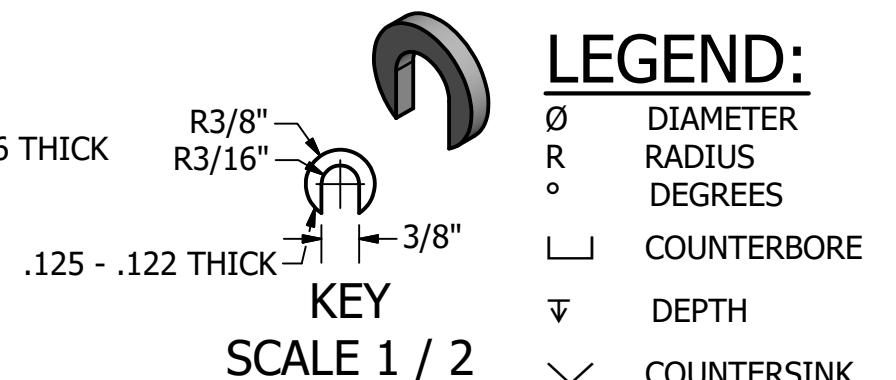
SET SCREW
SCALE 1 : 1



JAW PLATE
SCALE 1 / 2



COLLAR
SCALE 1 / 2



KEY
SCALE 1 / 2

LEGEND:

- Ø DIAMETER
- R RADIUS
- ° DEGREES
- └ COUNTERBORE
- ▽ DEPTH
- ✓ COUNTERSINK

| PARTS LIST | | |
|------------|-----|---------------|
| ITEM | QTY | PART NUMBER |
| 1 | 1 | BASE |
| 3 | 2 | JAW PLATE |
| 2 | 1 | SLIDING JAW |
| 4 | 1 | WISE SCREW |
| 5 | 1 | COLLAR |
| 6 | 1 | KEY |
| 9 | 2 | SLIDE KEY |
| 10 | 2 | SET SCREW |
| 7 | 1 | HANDLE ROD |
| 8 | 2 | HANDLE BALL |
| 12 | 2 | TAPER PIN |
| 11 | 4 | MACHINE SCREW |



DIGITAL DESIGN
GRAPHICS
TECHNOLOGY

WWW.DDGT.NET

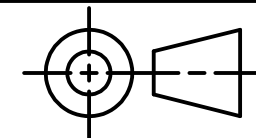


NEIL SCHAFER

1(707)761-6187

WWW.DDGT.NET/STUDENTPAGES/NSCHAFFER

NEILSCHAFER97@YAHOO.COM



TOLERANCES UNLESS SPECIFIED:
DECIMAL INCHES
X = ±.020
XX = ±.010
XXX = ±.005
FRACTIONAL ±1/64"
ANGLES ±1 DEGREE
SURFACES 32 ✓

COURSE: DDGT 240

INVENTOR DRAWING NAME:
MACHINE VISE

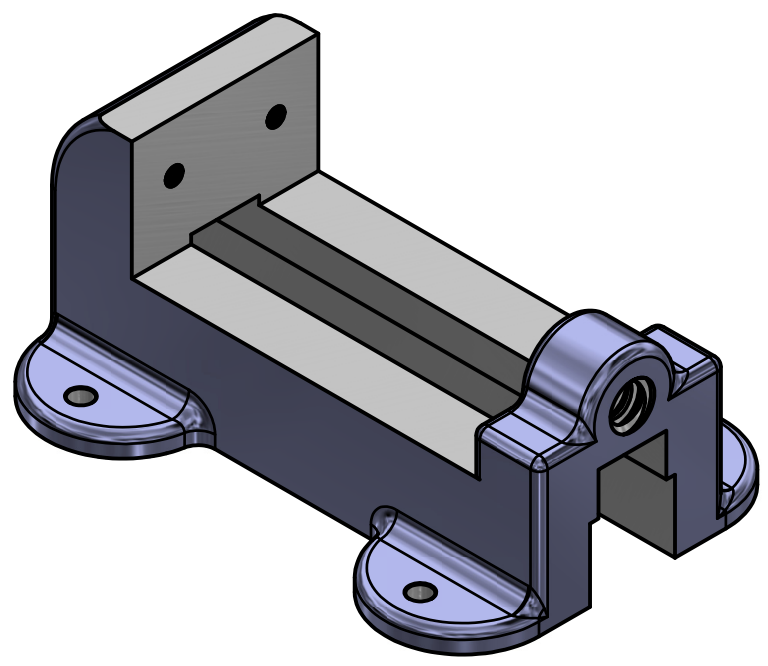
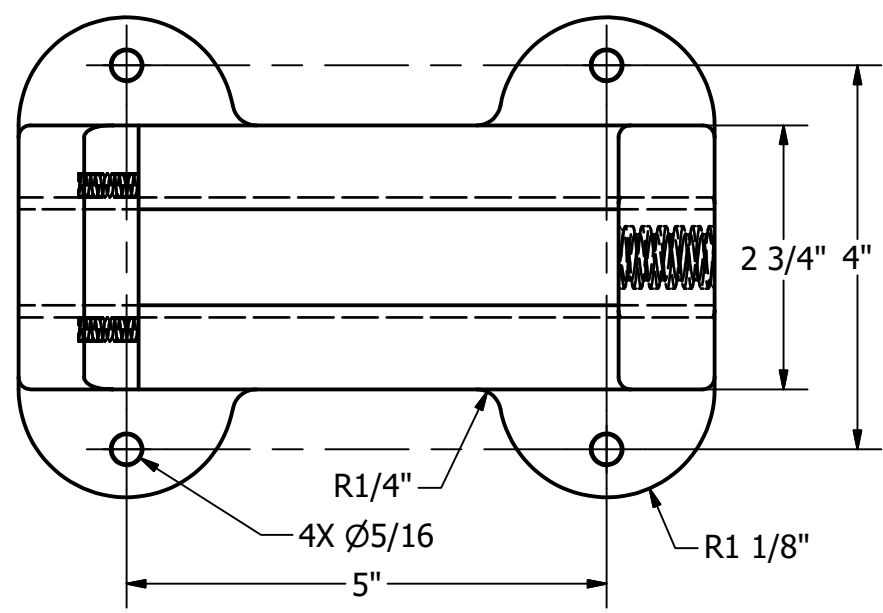
FIG #: 14-71

DRAFTER: NEIL SCHAFER

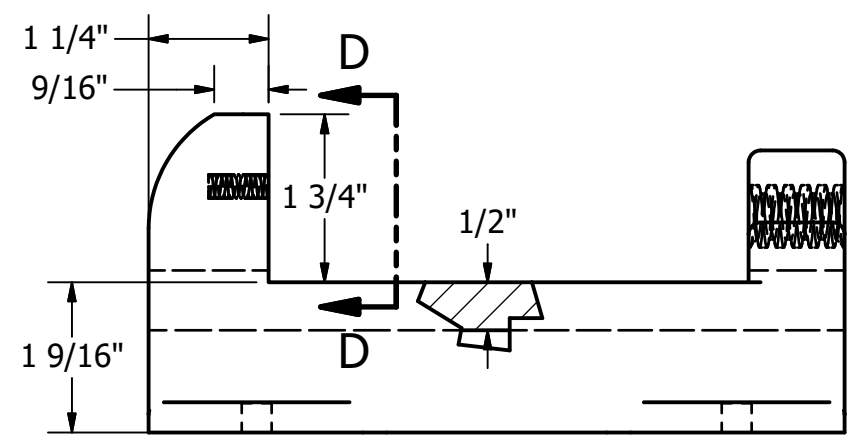
DATE: 9/26/2018

SCALE: AS NOTED

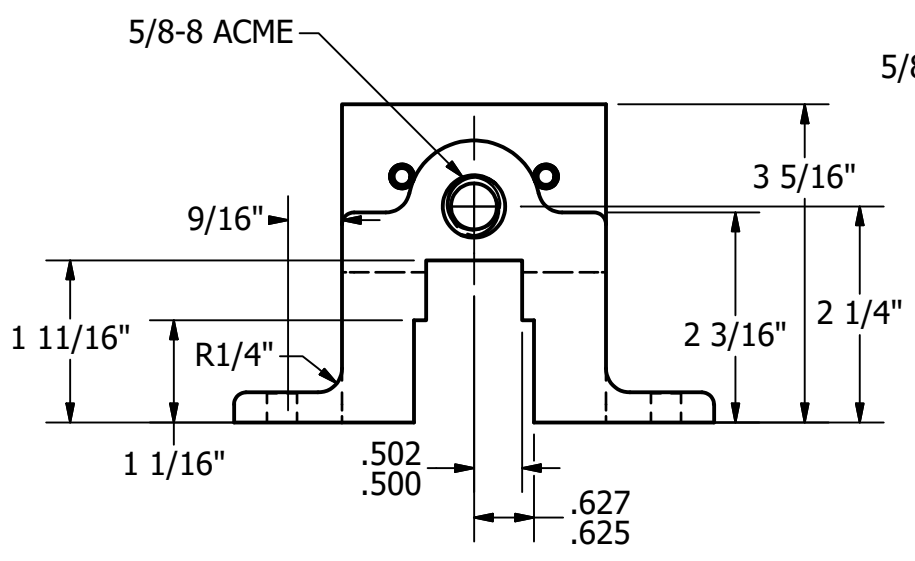
PAGE #: 2 OF 3



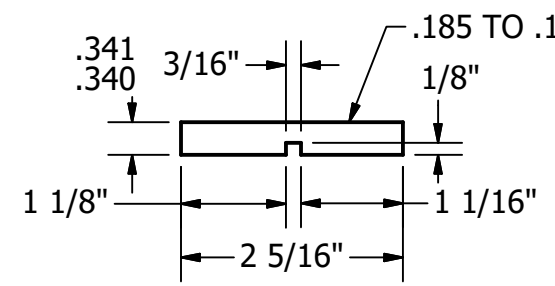
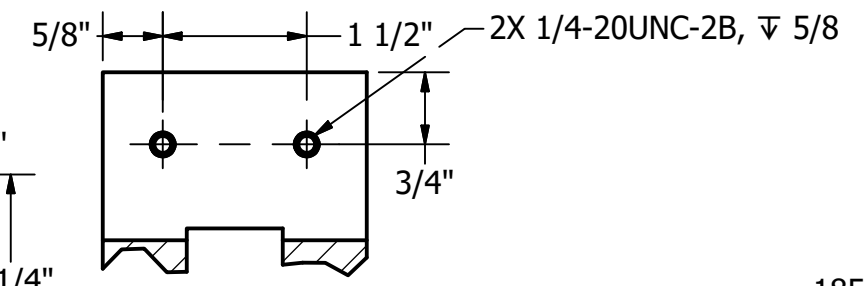
| PARTS LIST | | |
|------------|-----|---------------|
| ITEM | QTY | PART NUMBER |
| 1 | 1 | BASE |
| 3 | 2 | JAW PLATE |
| 2 | 1 | SLIDING JAW |
| 4 | 1 | WISE SCREW |
| 5 | 1 | COLLAR |
| 6 | 1 | KEY |
| 9 | 2 | SLIDE KEY |
| 10 | 2 | SET SCREW |
| 7 | 1 | HANDLE ROD |
| 8 | 2 | HANDLE BALL |
| 12 | 2 | TAPER PIN |
| 11 | 4 | MACHINE SCREW |



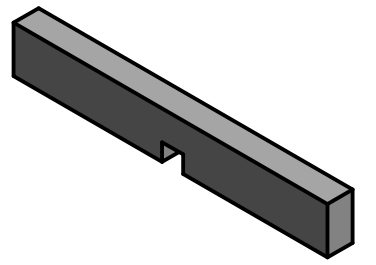
BASE
SCALE 1 / 2



SECTION D-D
SCALE 1 / 2

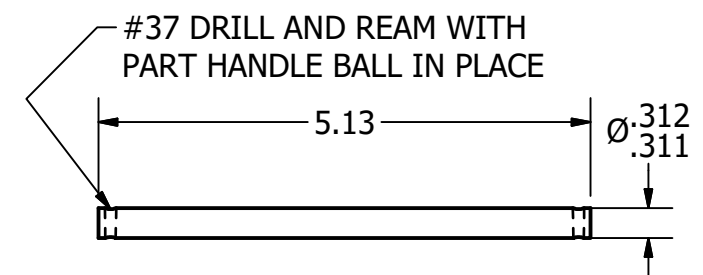


SLIDE KEY
SCALE 1 / 2

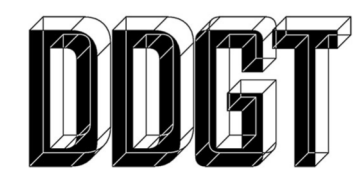
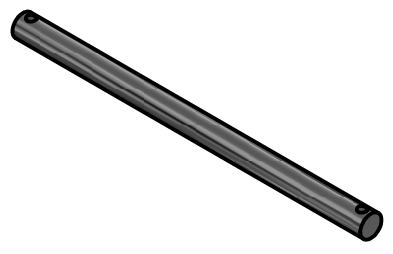


LEGEND:

- Ø DIAMETER
- R RADIUS
- ° DEGREES
- COUNTERBORE
- ∇ DEPTH
- ∨ COUNTERSINK



HANDLE ROD
SCALE 1 / 2

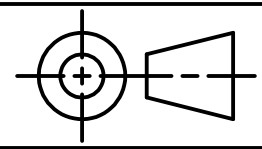


DIGITAL DESIGN
GRAPHICS
TECHNOLOGY

WWW.DDGT.NET



NEIL SCHAFER
1(707)761-6187
WWW.DDGT.NET/STUDENTPAGES/NSCHAFFER
NEILSCHAFFER97@YAHOO.COM



TOLERANCES UNLESS SPECIFIED:
DECIMAL INCHES
X = ±.020
XX = ±.010
XXX = ±.005
FRACTIONAL ±1/64"
ANGLES ±1 DEGREE
SURFACES 32 ✓

| | |
|------------------------|--------------|
| COURSE: | DDGT 240 |
| INVENTOR DRAWING NAME: | MACHINE VISE |
| FIG #: | 14-71 |
| DRAFTER: | NEIL SCHAFER |
| DATE: | 9/26/2018 |
| SCALE: | AS NOTED |
| PAGE #: | 3 OF 3 |